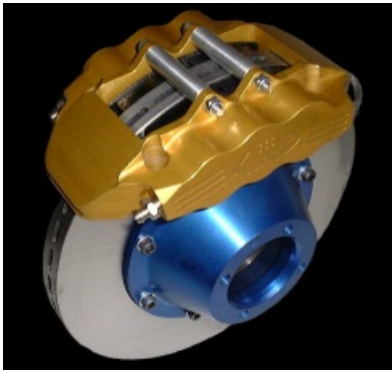


Brake calipers for universal fitment



Type A/B 6 pot

Type A suits 200-215mm x 10-20mm discs
Type B suits 228-265mm x 10-20mm discs
One piece body CNC machined from billet 2014A T6 alloy, hard anodised
Radial mounting, 109mm centres with 36.5mm offset from disc face
Stainless steel pistons, differentially sized to combat pad taper wear (25/28/30)
Single line fluid feed through 3/8UNF port
For vehicles up to 900kgs
Weight less pads and mounting 1.17kg
Brake pad shape MDB1200
1012100 Type A £455 plus vat per pair (£534.62 incl vat)
1012110 Type B £495 plus vat per pair (£581.62 incl vat)



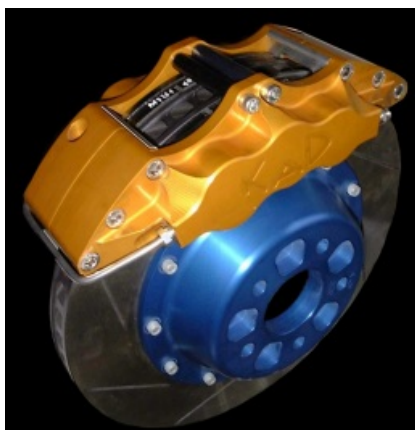
Type C 6 pot

Suits 300-320 x 28-32mm discs
One piece body CNC machined from billet 2014A T6 alloy, hard anodised
Radial mounting, 180mm centres with 30mm offset from disc face
Stainless steel pistons, differentially sized to combat pad taper wear (28/32/36)
Single line fluid feed through 3/8UNF port
Large saloons to 1800kgs, wheel sizes 15-17"
Weight less pads and mountings 2.3kg
Brake pad shape Mintex MDB1292
1012120 Type C £ 750 plus vat per pair (£881.25 incl vat)



Type E&F 6 pot

Available in three versions:
1012150L300: 300mm disc lug mounted
1012150R300: 300mm disc radial mounted
1012150R330: 330mm radial mounting
2 piece body CNC machined from billet 6082 T6 alloy, anodised Gold
Lug mounted 2 x 10mm holes on 100mm centres
Radial mount 2 x 10mm holes on 150.7 centres
Stainless steel pistons, differentially sized to combat pad taper wear (22/25/29mm)
Single line fluid feed through 3/8UNF port
Brake pad shape Mintex MDB1200
Medium to Large saloons to 1200kgs, wheel sizes 15-17"
Weight less pads and mountings 1.55kg
Type E all types £ 408 plus vat per pair (£479.40 incl vat)



Type G 6 pot

Suits 330 x 28-30mm discs
Two piece body CNC machined from billet 2014A T6 alloy, hard anodised
Radial mounting, 180mm centres with 30mm offset from disc face
Aluminium pistons, differentially sized to combat pad taper wear (28/32/36)
Dust seals fitted
Single line fluid feed through 3/8UNF port
Large saloons to 1800kgs, wheel size 17-18"
Weight less pads and mountings 2.5kg
Brake pad shape Mintex MDB1292
Price £610 per pair plus vat (£716.75 incl vat)



Rear 2pot

Suits rear disc applications, disc sizes 235-285mmx10mm
Lug mounted 3/8" holes on 88.9mm centres
2 piece body CNC machined from billet 6082 alloy
Anodised alloy pistons 36mm diameter
Single line feed through 3/8 UNF port
Suitable for rear caliper use on small/medium saloons or single seater
Brake pad shape Mintex MLB19